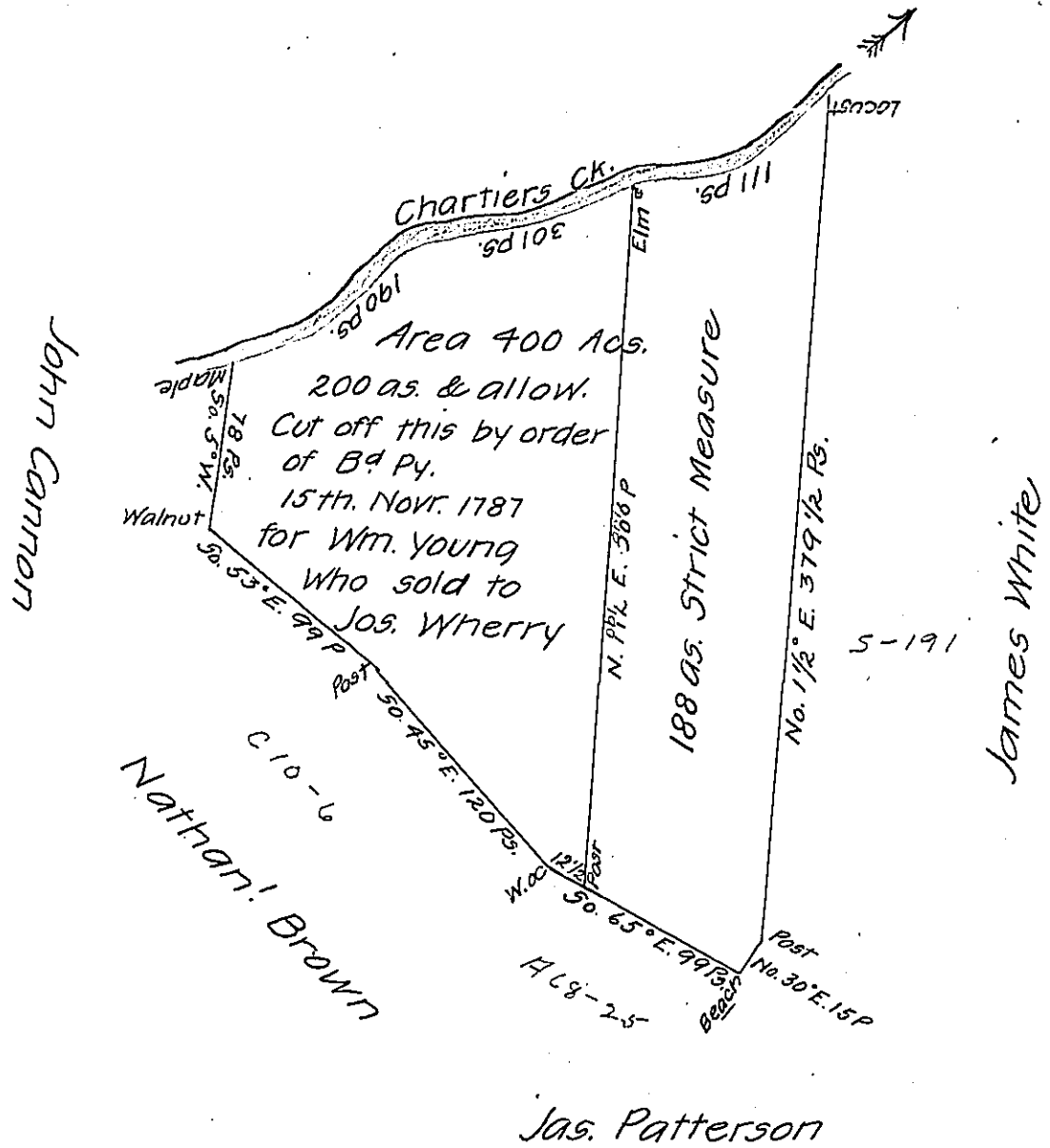


Courses & Distances

- up ye ck.
 So. 50° W. 58 Ps.
 So. 80° W. 38 Do.
 So. 68° W. 46 Do.
 So. 74 W. 22 Do.
 So. 82 W. 42 Do.
 So. 43 W. 54 Do.
 So. 68 W. 41 Do.
 301 -



Ret'd 5th June 1786

A Draught of a survey lying on Chartiers Ck. Washington County containg 400 Acs. Strict Measure, executed May ye. 23d. 1785 in consequence of a Certift for 5^d Quantity granted to Jno. White by the Commiss^{rs} appointed by Virg^a to adjust the Claims to unpatented Lands in the Counties of Monong^a Volu^a and Ohio and duly entered with the County Surveyor as appears from the list of Entries transmitted from the Surv['] Genl. Office. Enter'd 8th. March 1786.

Note. this Survey was returned 18th. of May last Presley Nevill } including 438 Acs. & 71 Ps but objections being made. Mattw. Pritchie } D. Ss. in the office to receiving that Quantity Mr. White has applied and we have reduced it to the exact 400 Acs.

To Jno. Lukens Esqr. S. Genl.

IN TESTIMONY that the above is a copy of the original remaining on file in the Department of Internal Affairs of Pennsylvania, made comformably to an Act of Assembly approved the 16th day of February 1833, I have hereunto set my hand and caused the Seal of said Department to be affixed at Harrisburg, this seventeenth day of April 1907

Isaac B. Brown
 Secretary of Internal Affairs.